



# AssistEdge RPA Enterprise Edition 17.6

**Oracle EBS Microbots  
Prerequisites Manual**

## Copyright Notice

©2018 EdgeVerve Systems Limited (a fully owned Infosys subsidiary), Bangalore, India. All Rights Reserved. This documentation is the sole property of EdgeVerve Systems Limited (“EdgeVerve”). EdgeVerve believes the information in this document or page is accurate as of its publication date; such information is subject to change without notice. EdgeVerve acknowledges the proprietary rights of other companies to the trademarks, product names and such other intellectual property rights mentioned in this document. This document is not for general distribution and is meant for use solely by the person or entity that it has been specifically issued to and can be used for the sole purpose it is intended to be used for as communicated by EdgeVerve in writing. Except as expressly permitted by EdgeVerve in writing, neither this documentation nor any part of it may be reproduced, stored in a retrieval system, or transmitted in any form or by any means, electronic, mechanical, printing, photocopying, recording or otherwise, without the prior written permission of EdgeVerve and/ or any named intellectual property rights holders under this document.

## Table of Contents

<b>1. Introduction to Oracle EBS Configuration</b>	<b>4</b>
1.1 About AssistEdge Automation Studio	4
1.2 Scope of the manual	4
<b>2. Environment Variables</b>	<b>5</b>
<b>3. Control Panel Settings</b>	<b>6</b>
3.1 Java Network Settings	6
3.2 Advanced Java Settings	7
<b>4. Process with Oracle EBS Microbots</b>	<b>8</b>
<b>5. Dependency on the Third Party Library</b>	<b>9</b>
5.1 Java Network Settings	9

# 1 Introduction to Oracle EBS Configuration

---

## 1.1 About AssistEdge Automation Studio

---

Automation Studio provides a design canvas to create and configure process automations. It has an intuitive user interface with simple drag & drop workflow activities and user-friendly menus/tools to design process automations. It contains options to run test automations before publishing or deploying them.

## 1.2 Scope of the manual

---

**The following features are included in this document to use the information effectively:**

- ▶ Setting up the environment for Oracle EBS Forms to open in the system.
- ▶ Setting up the environment for automation of the Oracle EBS System.

This document is intended for Automation Studio users who conceptualize, test and implement workflows.

## 2 Environment Variables

---

### Set the environment variable as:

**\_JAVA\_OPTIONS:** location of the jar services is given below:

```
-javaagent:"D:\AssistEdge\ACE\JarService\ProtonAgent.jar"  
-Dwindow_mode="WINDOW_CLASS_BASED" -Djava.security.policy="D:\AssistEdge\ACE\JarService\config\  
nosecurity.policy"
```

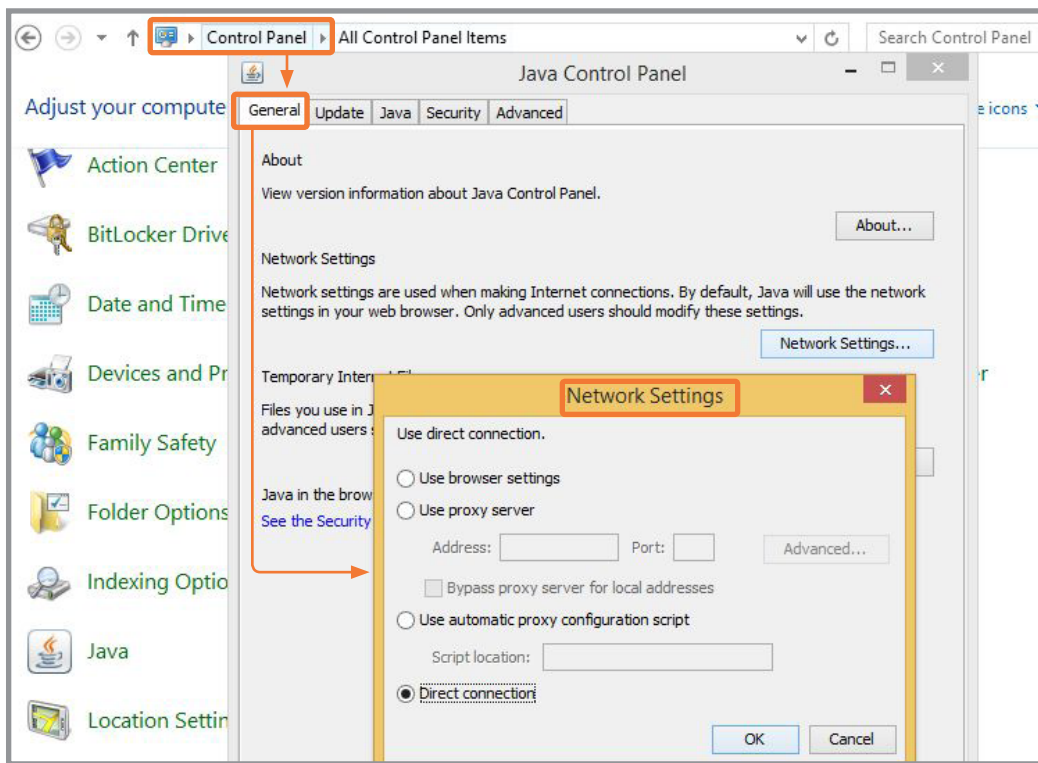
Replace the **highlighted** path as per the jar services inside the ACE/Agent from the local system.

# 3 Control Panel Settings

Set the Java settings from the Control panel.

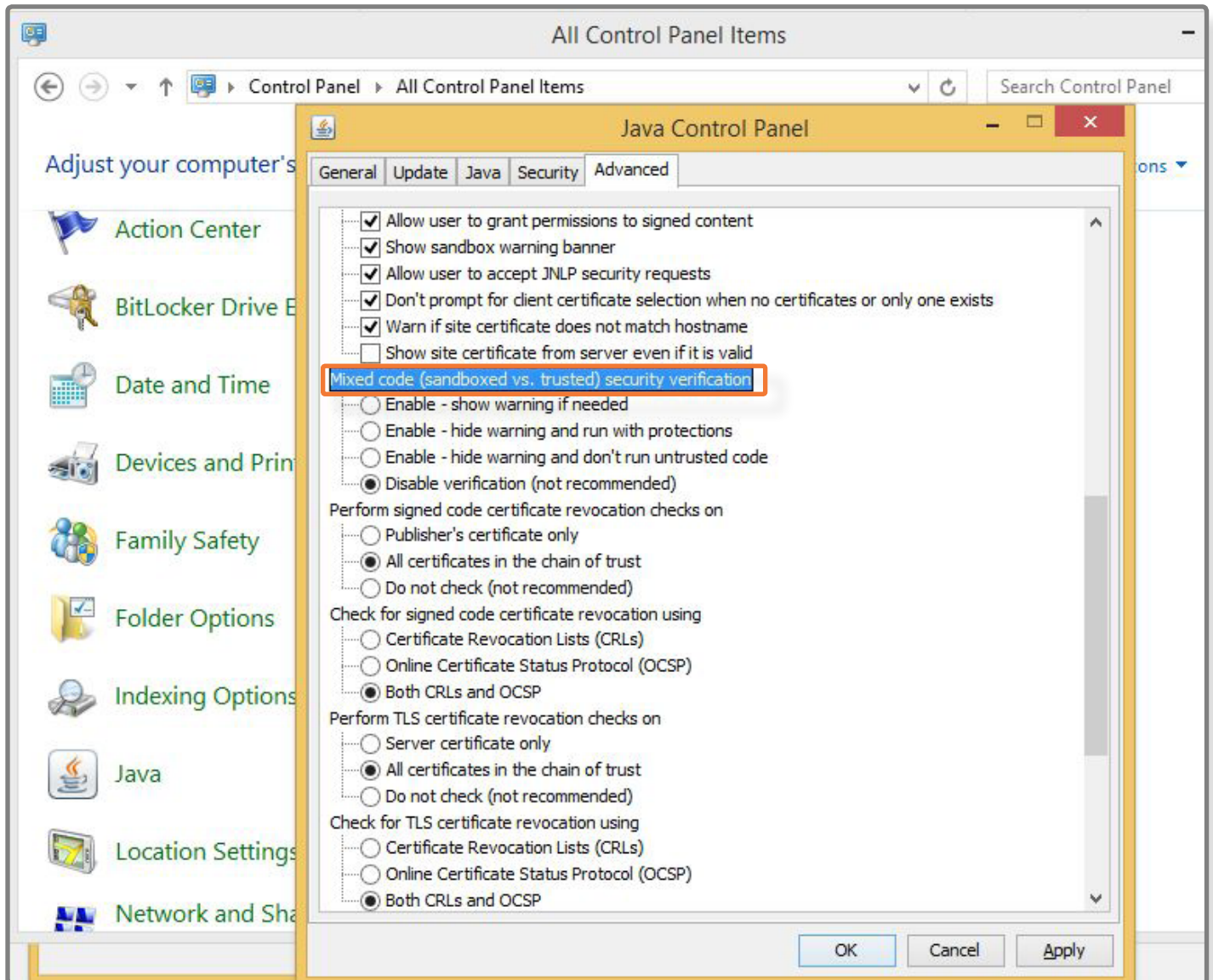
## 3.1 Java Network Settings

Open Control Panel → Open Java → General Tab → Network Settings



## 3.2 Advanced Java Settings

Open Control Panel → Open Java → Advanced (Mixed Code (Sandboxed vs Trusted) Security verification



# 4

## Process with Oracle EBS Microbots

---

**Start the Mapping Server before running the 'Oracle EBS Form Open' bot in the process.**

Create a Reset process for the process using the sign-in process of the Oracle EBS instance which does the login for it, to run through RPA on a remote system.



## 5 Dependency on the Third Party Library

---

### 5.1 Interop.SHDocVw.dll

---

This library is used to interact and automate an Internet Explorer browser. **This library is not a part of the AE product release.**

To run the bot, place the DLL at the appropriate path: “\ACE\ProtonFiles\Dllrepository”.

**Thank you**

The background is a solid blue color. On the right side, there are several overlapping, semi-transparent, curved shapes in a lighter shade of blue. These shapes are abstract and resemble stylized letters or organic forms, creating a layered, geometric effect.